

ROANOKE CHOWAN COMMUNITY HEALTH CENTER

ANNUAL REPORT

2018



WWW.RCCHC.ORG

AHOSKIE COMPREHENSIVE CARE
MURFREESBORO PRIMARY CARE
COLERAIN PRIMARY CARE
CRESWELL PRIMARY CARE
HERTFORD COUNTY STUDENT WELLNESS CENTER



MISSION STATEMENT

To provide patient centered, high quality, compassionate healthcare responsive to the diverse needs of the people we serve.

VISION STATEMENT

To be recognized as a transformational provider of healthcare: empowered, owned, and supported by the people we serve.

BY THE NUMBERS: A LOOK AT LAST YEAR



Balance Sheet FY2018

Current Ratio:

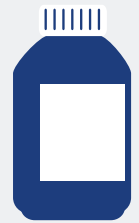
1.75

Days Cash on Hand:

58.3



**21 Medical Providers, 5
Licensed Clinical Social
Workers, 5 Pharmacists, 55
Clinical Support Staff, and
69 Administrative Staff are
part of the RCCHC team.**



**50,862
prescriptions filled
in 2018 by our
ACC Pharmacy
for 3,500 patients.**



**15,678
unique patients
seen in 2018.**

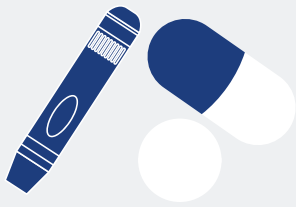


**47,108
Medical Visits
in 2018.**

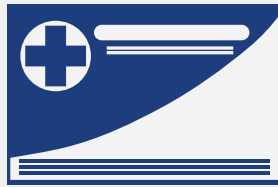


**6,688
immunizations
given in 2018.**

BY THE NUMBERS: A LOOK AT LAST YEAR



Prescription Assistance
Programs funded by Bertie and Chowan Community Benefit Grants provided 2,451 medications to 510 patients, resulting in \$1,898,783.53 in savings.



2018 Payor Mix
Medicare - 45%
Private/3rd Party - 31%
Medicaid - 16%
Self Pay/Uninsured - 8%



Revenue sources in 2018:
Patient Revenue - 39%
Pharmacy Revenue - 42%
Federal/State/Private Grants - 18%
Other Income - 1%



RCCHC hosted
24 medical students
from 6 schools
in 2018.



RCCHC assisted over
800 patients with
enrollment and issues
with Medicare and
Medicare Part D.



1,523
indigent patients
received 5,283 labs at
RCCHC locations
through November.



Through funding from
the Roanoke Chowan
Foundation 408 RCCHC
sliding fee patients
received 1,218 services
at ECU School of Dental
Medicine for total
services worth \$191,548.



449
Migrant and seasonal
farm workers seen.



RCCHC has retained
the Silver level
"Advocacy Center of
Excellence" designation
from the National
Association of
Community Health
Centers.

SUCCESSSES AND GOALS: 2018

2018 UDS DATA

<p>Adult tobacco use assessment & Adult tobacco cessation counseling for tobacco users</p> <p>91.38%</p> <p>2017 - 91.1%</p>	<p>Ischemic Vascular Disease (IVD) & aspirin or other anti-thrombotic therapy (adult)</p> <p>89.00%</p> <p>2017 - 47%</p>	<p>Depression Screening and Follow-Up (12+ at time of encounter with positive screening for Clinical Depression, received follow-up plan same day)</p> <p>84.26%</p> <p>2017 - 65%</p>
---	--	---

	BENCHMARK	RCCHC GOAL	RCCHC CURRENT
DIABETES MANAGEMENT A1C>9%	16.10%	16.00%	30.70%
BMI SCREENING 18-64	70.00%	60.00%	37.10%
BMI SCREENING 65+	70.00%	60.00%	40.00%
CERVICAL CANCER SCREENING	93.00%	70.00%	49.60%
COLORECTAL CANCER SCREENING	70.50%	80.00%	50.50%

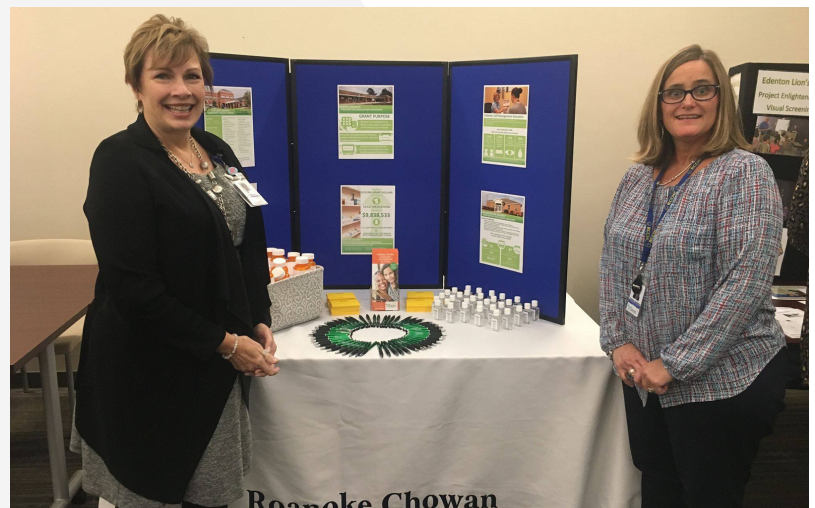
ROANOKE CHOWAN COMMUNITY HEALTH CENTER ANNUAL REPORT 2018



Left to Right: Senator Richard Burr visit to CPC-W; NC First Lady Kristin Cooper and former NFL player and First Fruits Farm founder Jason Brown speak at the F2S2H Farm to Table Dinner during National Health Center Week.

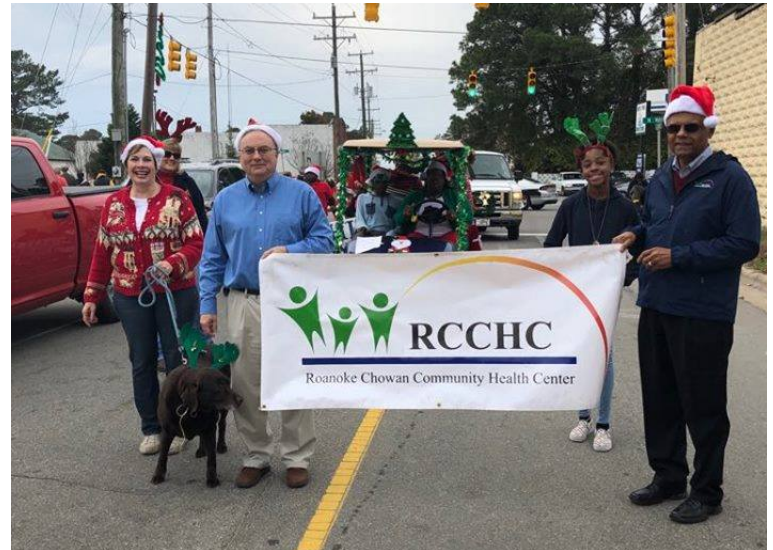


Left to Right: UNC Lineberger Cancer Center staff visit ACC; RCCHC staff and Alice Pollard of NCCHCA at ACC's Diaper Drive during National Health Center Week.



Left to Right: F2S2H youth garden stewards during the NC Office of Rural Health visit to ACC; RCCHC CEO Kim Schwartz and Medication Management Coordinator Johnna Godwin at the Vidant Community Benefit Grant's 20th anniversary celebration.

ROANOKE CHOWAN COMMUNITY HEALTH CENTER ANNUAL REPORT 2018



Left to Right: RCCHC staff and board members at the Murfreesboro Watermelon 5k "Afterglow"; RCCHC staff and board members at the Colerain Christmas Parade.



Left to Right: RCCHC Pharmacy Director, Angie Kent-Mitchell, stars in a video to raise awareness for prescription drop boxes in RCCHC pharmacies; RCCHC board member Luther Culpepper and Dr. John Stanley at the location of Woodland Primary Care; RCCHC CEO Kim Schwartz and Chief Development & Program Officer Caroline Doherty with North Eastern NC Regional Representative for Senator Thom Tillis, Trey Lewis.



Left to Right: Creswell Primary Care celebrates its 2nd birthday; RCCHC staff at the Hertford-Gates Relay for Life; ACC staff wearing green in support of "Hill Visit Day" 2018.